



Picardy Close, Hoddesdon, EN11 0FA

This stunning four-bedroom detached house with four ensembles and a landscaped south facing rear garden is recently built high specification and beautifully presented 1700 sq ft family home offers luxury living. The property boasts four double bedrooms, each with its own ensuite bathroom, providing ultimate comfort and privacy. The spacious and bright open plan living area on the ground floor features underfloor heating throughout, creating a warm and inviting atmosphere. The kitchen is an exceptional space, boasting high gloss, high specification finishes, granite work surfaces, and fully integrated Neff appliances. The kitchen seamlessly flows into the dining room, which opens to the landscaped garden through French doors, perfect for entertaining and enjoying outdoor living. Situated within walking distance of the picturesque Lea Valley Regional Park, residents can enjoy beautiful walks and a range of outdoor activities. The property is also conveniently located just a short drive away from the Town Centre and Railway Station, offering easy access to amenities and transportation links.

Key features

- Stunning four bedroom detached family home
- Landscaped south facing rear garden for outdoor enjoyment
- Underfloor heating on the ground floor for added warmth
- Fully integrated Neff appliances in the high gloss kitchen
- Four ensembles for ultimate comfort and convenience
- High specification finishes throughout the property
- Spacious and bright open plan living area
- Close proximity to Lea Valley Regional Park and Town Centre



hoddesdon@paulwallace.co.uk

01992 466471

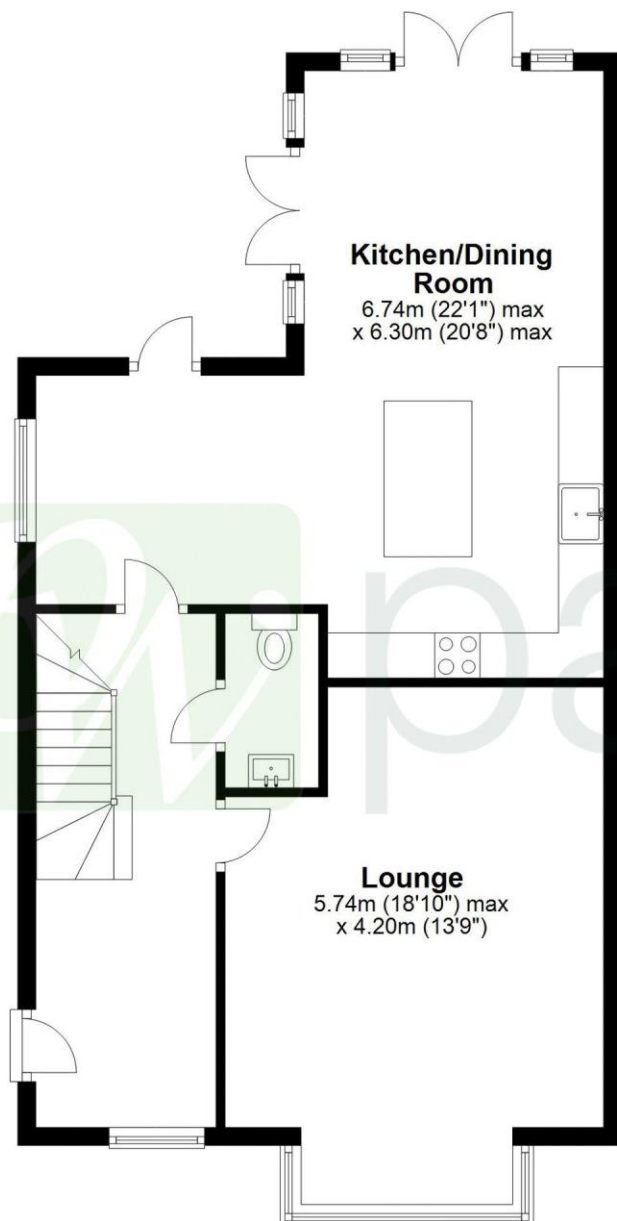






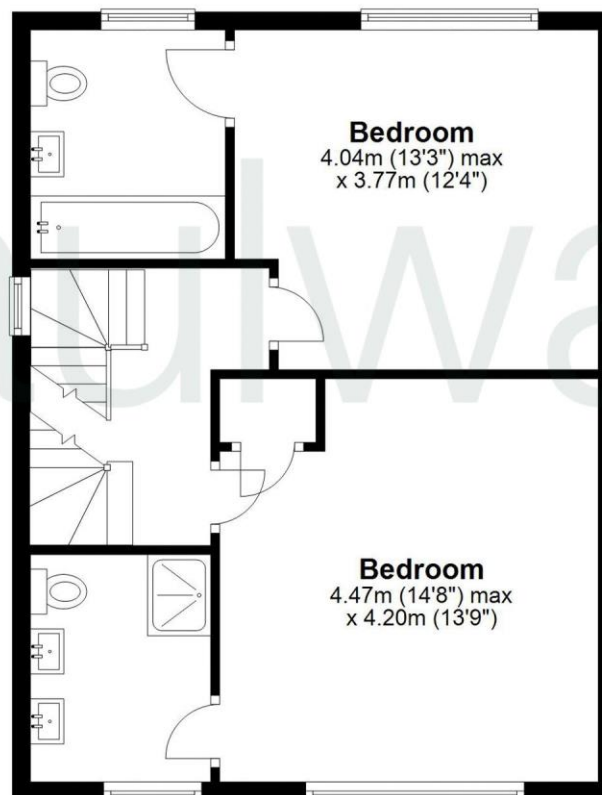
Ground Floor

Approx. 64.8 sq. metres (697.3 sq. feet)



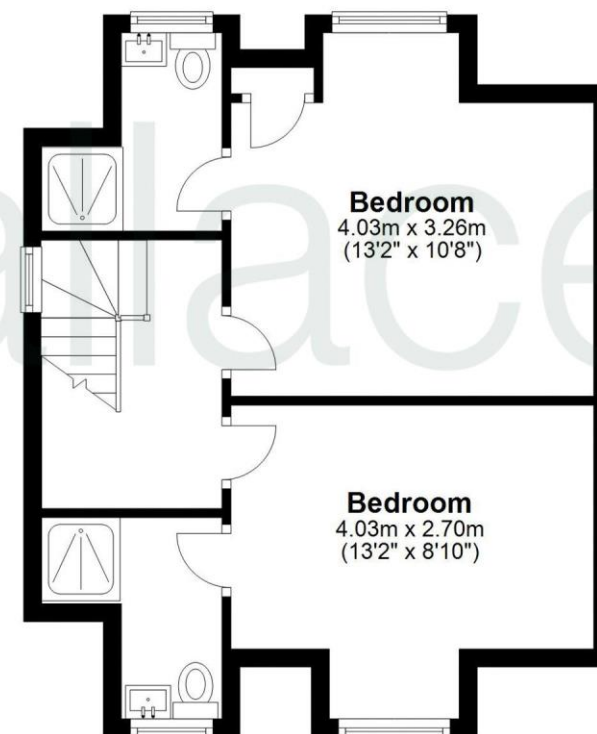
First Floor

Approx. 52.5 sq. metres (565.6 sq. feet)



Second Floor

Approx. 40.7 sq. metres (437.7 sq. feet)



Total area: approx. 158.0 sq. metres (1700.6 sq. feet)

FOR ILLUSTRATIVE PURPOSES ONLY. NOT TO SCALE

Whilst every attempt has been made to ensure the accuracy of the floor plan shown, all measurements, positioning, fixtures, features, fittings and any other data shown are an approximate interpretation for illustrative purposes only and are not to scale. No responsibility is taken for any error, omission, miss-statement or use of data shown.

Property marketing provided by www.matthewkyle.co.uk







Registered Address: Unit 3 The Brookfield Centre, Cheshunt, Herts, EN8 0NN Company Registration Number: OC414280 | VAT Number: 276958046 © 2022 Paul Wallace Group LLP trading as Paul Wallace Estate Agents



Paul Wallace Estate Agents

70 High Street
Hoddesdon
Hertfordshire
EN11 8ET



01992 466471



hoddesdon@paulwallace.co.uk



www.paulwallace.co.uk



Opening Times

Mon	9am to 6.30pm
Tues	9am to 6.30pm
Wed	9am to 6.30pm
Thurs	9am to 6.30pm
Fri	9am to 6.30pm
Sat	9am to 5.00pm
Sun	Closed



paulwallace
estate agents

Agents Note: Whilst every care has been taken to prepare these sales particulars, they are for guidance purposes only. All measurements are approximate and are for general guidance purposes only and whilst every care has been taken to ensure their accuracy, they should not be relied upon. Potential buyers are advised to recheck the measurements.